

図2.18 初期段階のアニワ湾における環境脆弱性地図
 (注：この地図は2004～2005にかけて行われた現地調査のデータによって補完される予定)

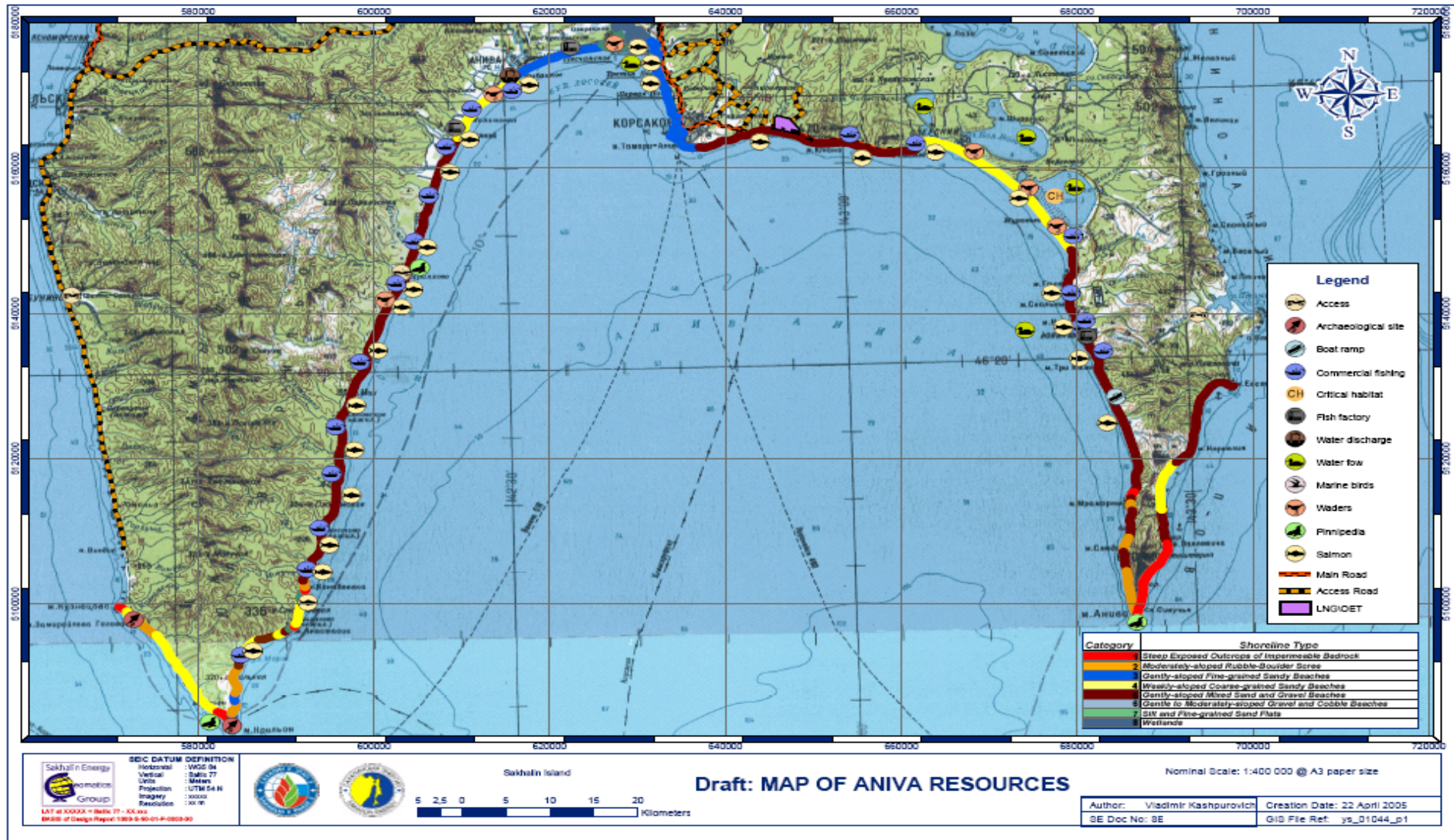
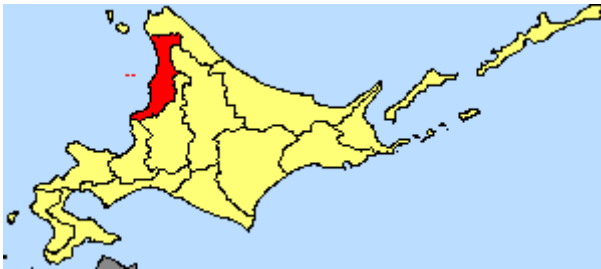


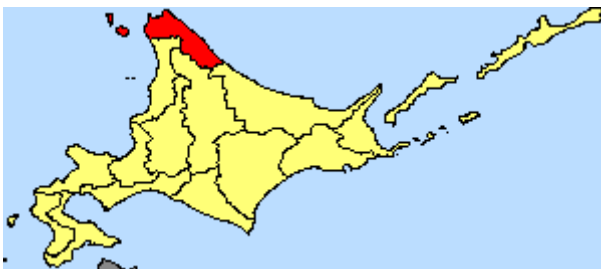
図2.19 北海道北部の海岸線における脆弱性を示した一連の地図の例

Six Coastal Regions of Northern Hokkaido (West to East)

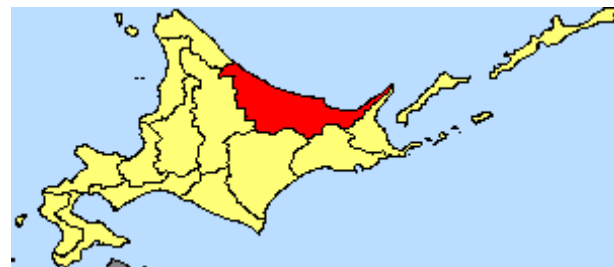
Rumoi Region



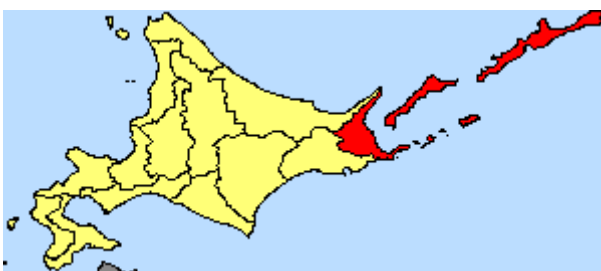
Soya Region



Aburatsubo Region



Nemuro Region



Kushiro Region

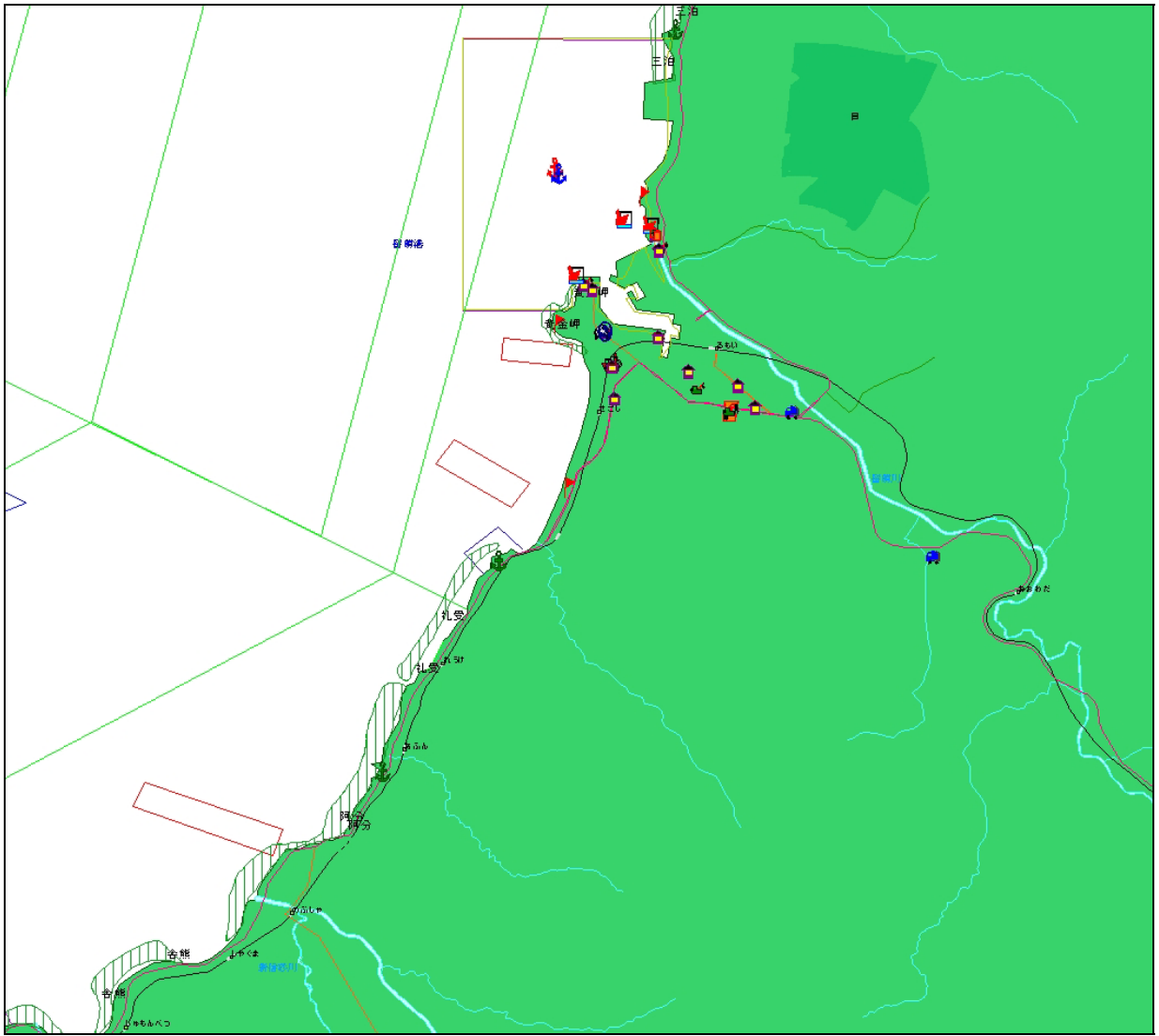


Key to Location of Example Maps (following)

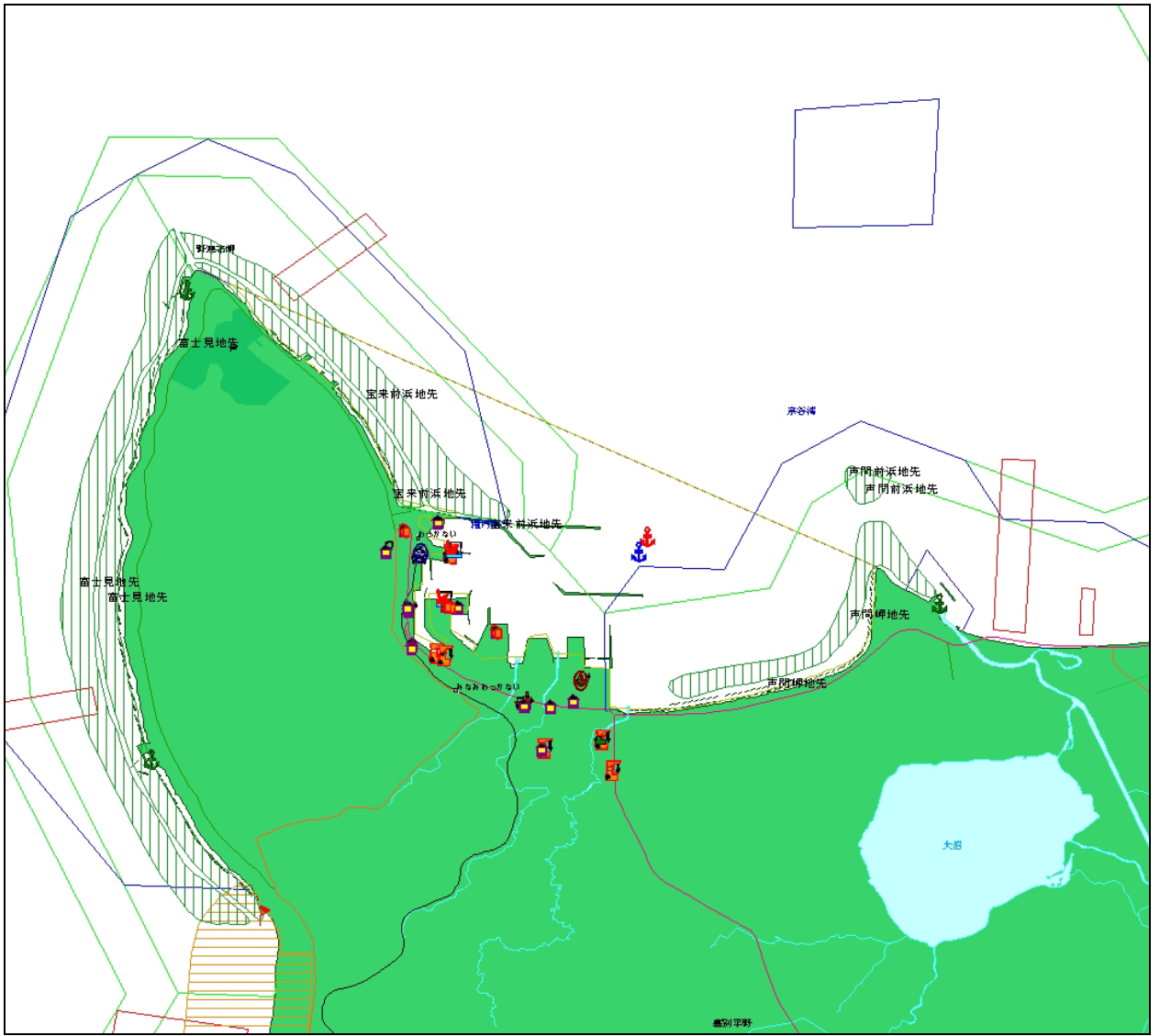


Key to Features on Example Maps (following)

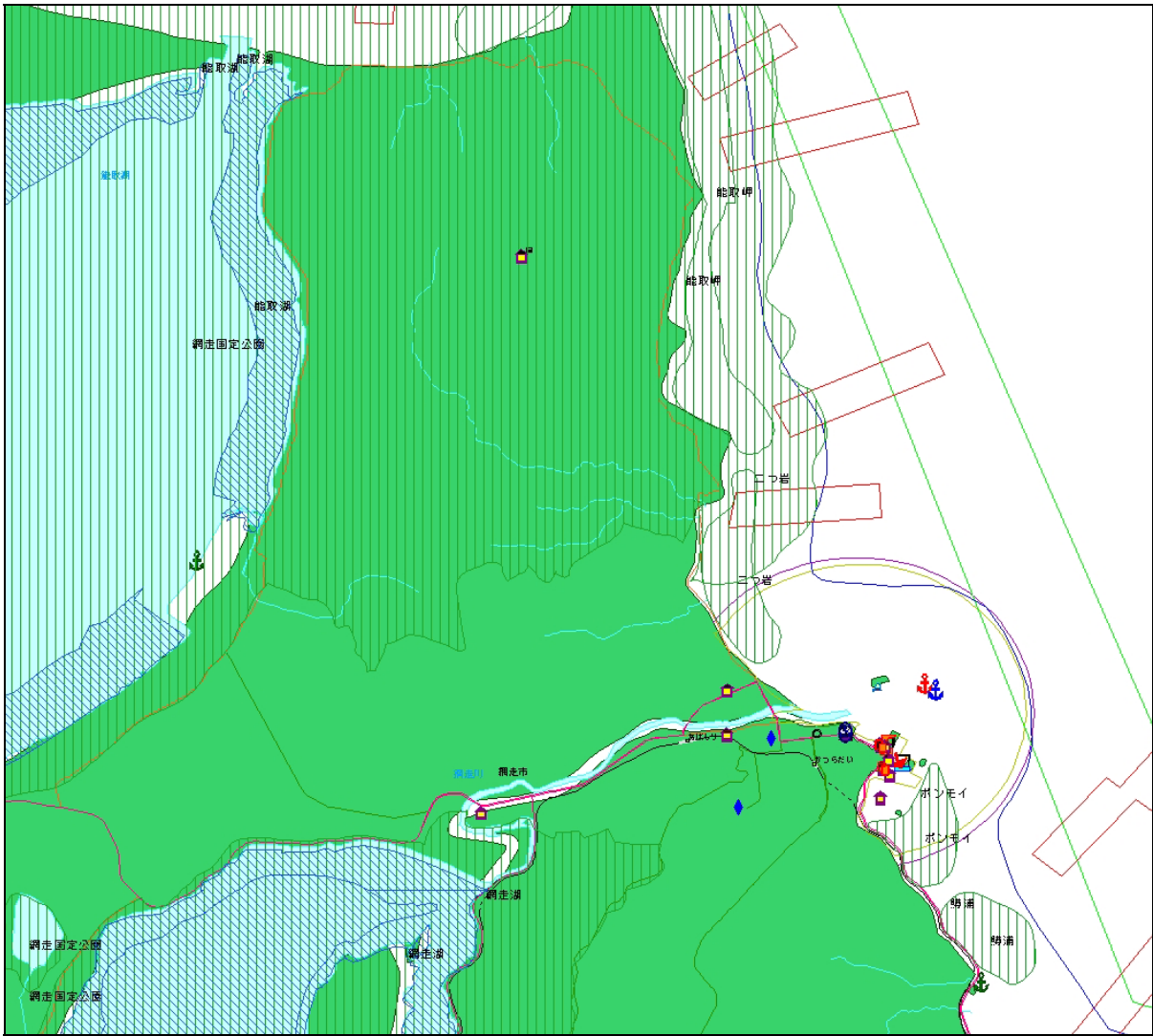
Natural and Physical Features		OSR Facilities and Equipment		Buildings, Sensitive Receptors and Important Features		Demarcated Areas (includes sensitive, administrative, protected areas etc)	
	Sea turtle egg-laying ground		Equipments storage facility		Agency headquarters etc.		Wetland
	Sea animal habitat		Oil fencing boat		Secure department etc.		Algae
	Harbors		Dredger		Aviation station		Ramsar convention registered wetland
	Port rule applied port		Working boat		Communication office etc.		Tidal flat
	Fishing port		Tugboat		Waterway observation point		Quasi-national park
	Power plant		Tank lorry car		Beacon office etc.		National park
	Water intake		Oil recovery vessel		Marine traffic center		Coral reef
	Marina		Oil collection device		School		Mangrove
	Seaside resort		High viscosity oil collection net		Industry facilities on coast		Common fishery
	Gathering shellfish place		Oil absorbing car		Natural monument		Demarcated fishery area
	Marine park		Oil collecting vessel		Place of scenic beauty		Drift-net fishing area
	Birds		Waste oil disposal facility		Historic site		Harbor district, port rule applied district, fishing port district port rule applied sea route, U.S. military maneuver district, etc



1 – Extract from Rumoi Sensitivity Map



2 – Extract from Wakkanai Sensitivity Map



5 – Extract from Abashiri Sensitivity Map

図2.20 ロシア連邦非常事態調整システムの組織

(RSChS: Russian Unified Emergency Prevention, Preparedness and Response System)

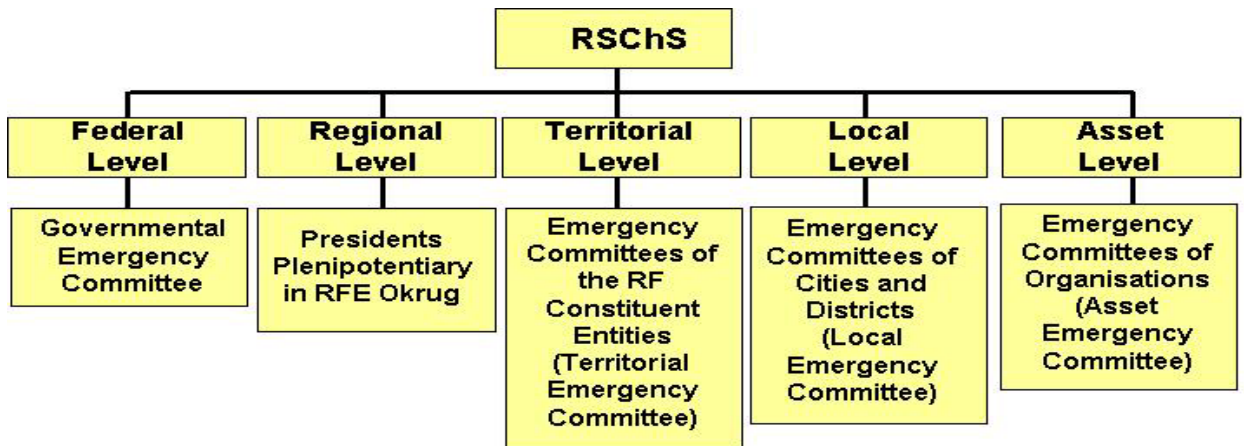


図2.21 SEICの油流出対応計画の組織 (2004)

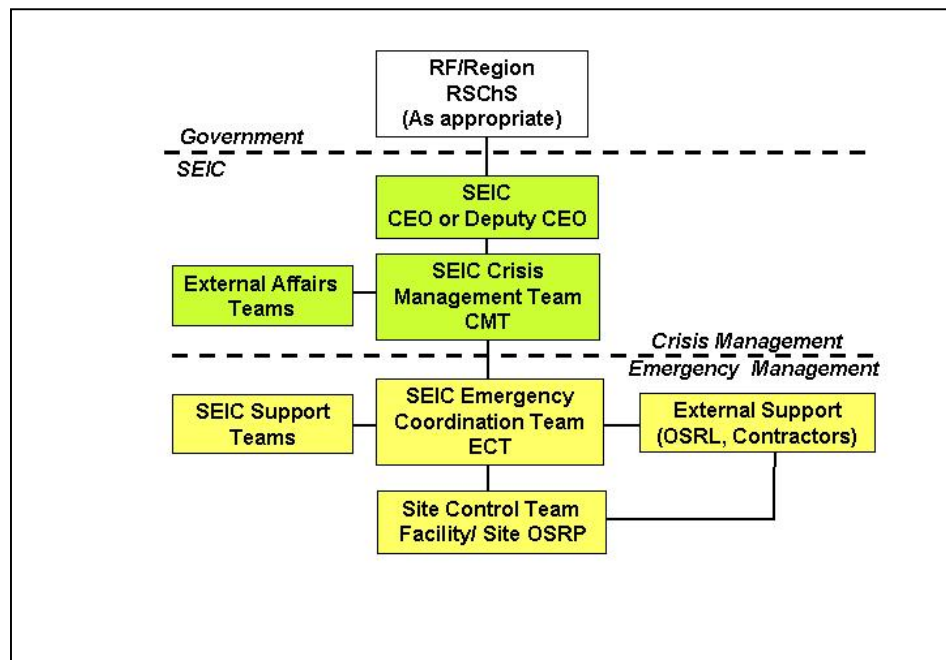


図2.22 油流出非常事態調整チーム体制の概略

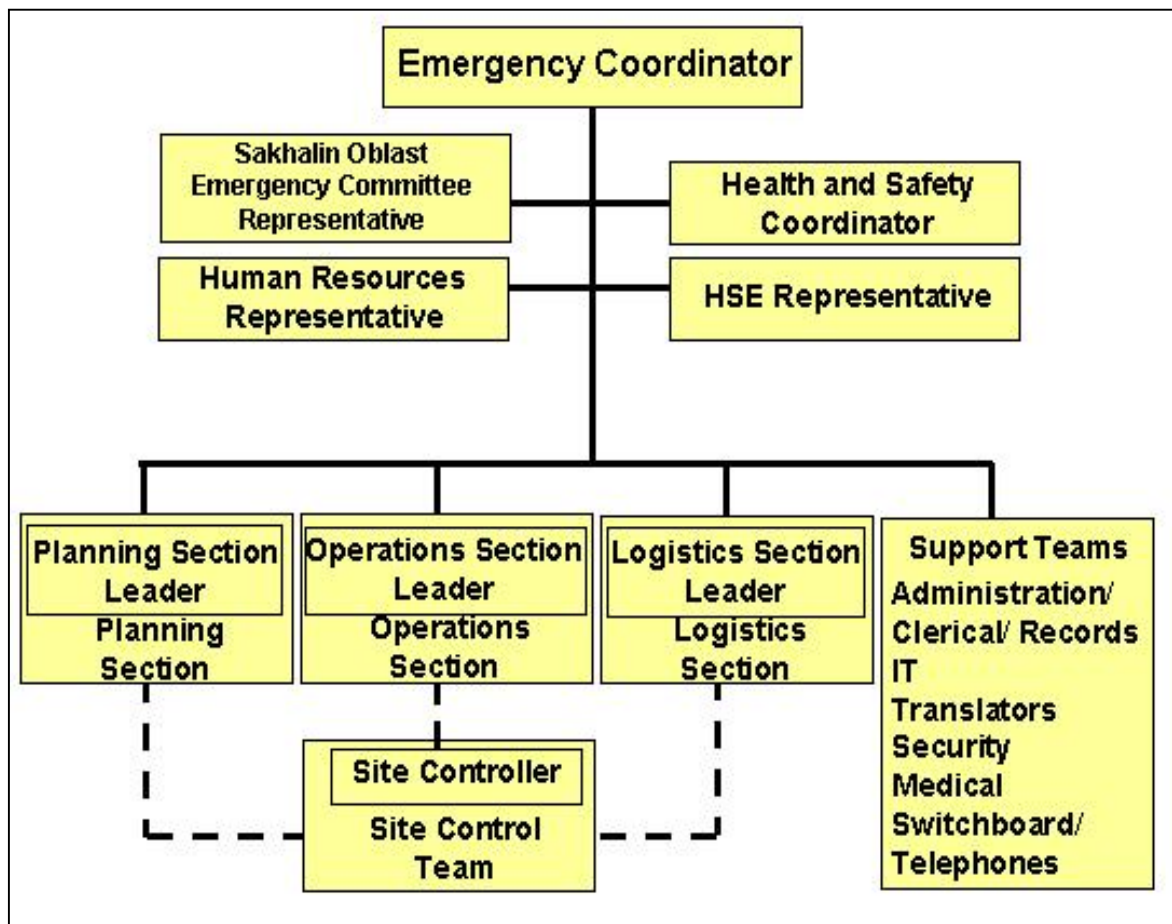


図2.23 一般的な氷結期間：ピルトン - アストフ

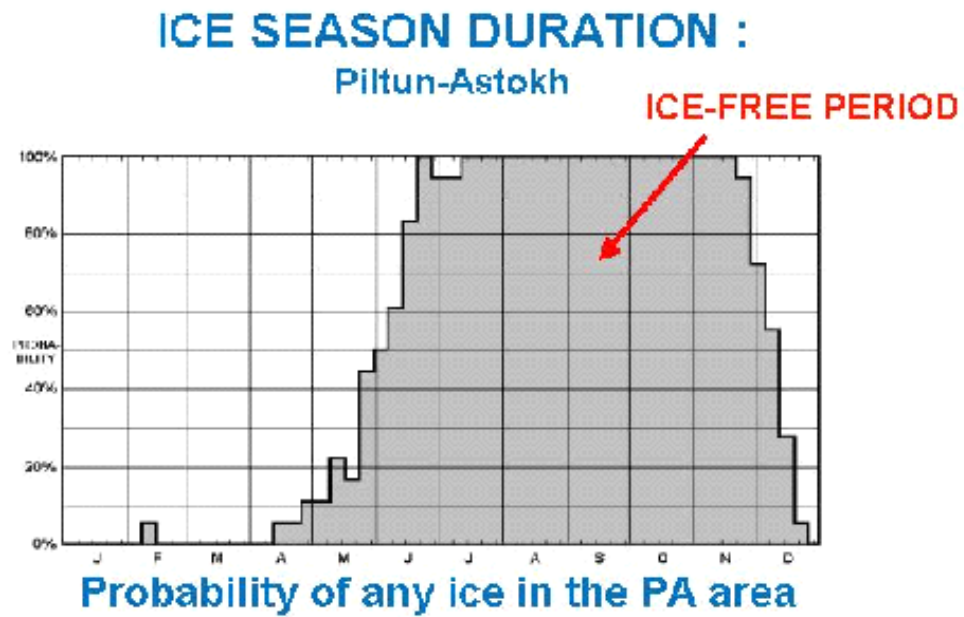


図2.24 一般的な氷結期間：ルンスコエ

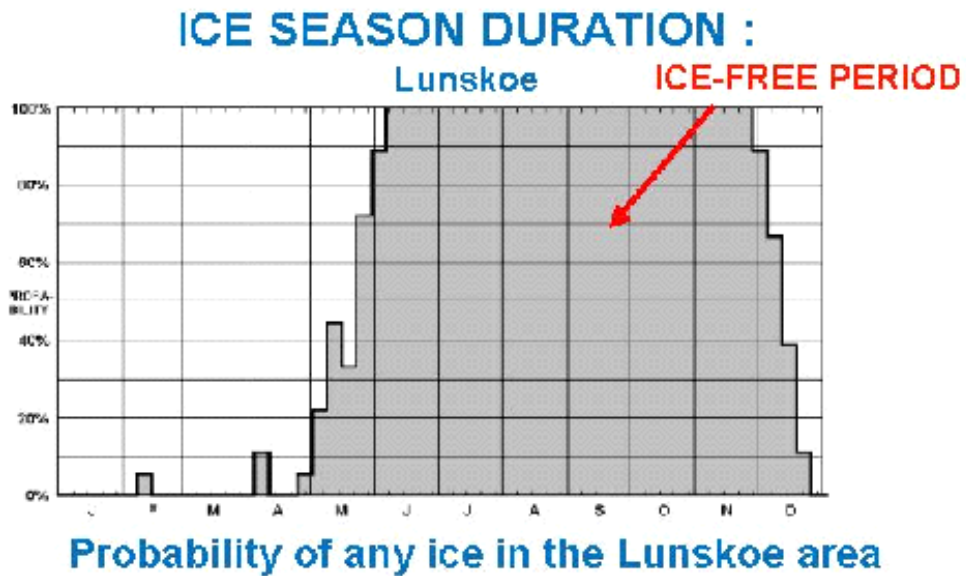


図2.25 一般的な氷結期間：アニワ湾

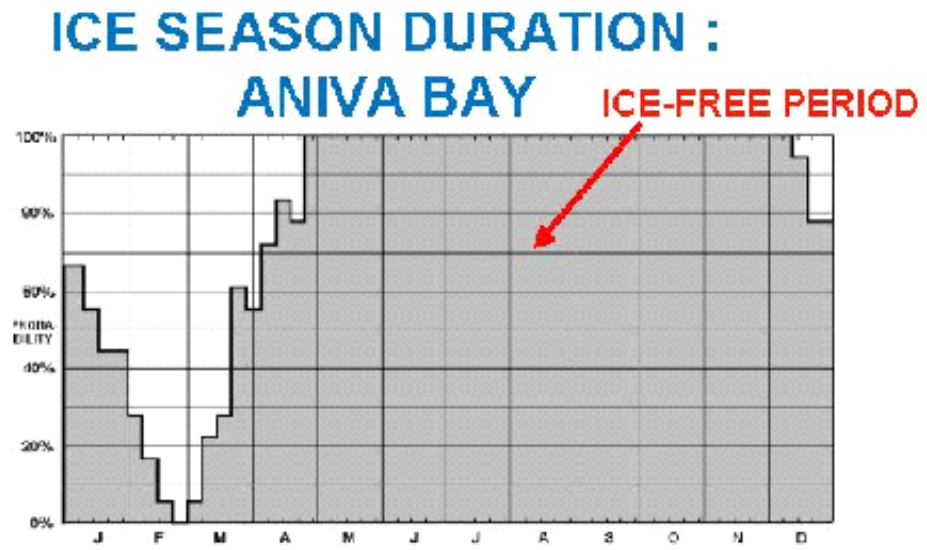


図2.26 浮氷の大きさの例

FLOE SIZE

- FROM PANCAKE ICE TO GIANT FLOES (UP TO >30 KM)

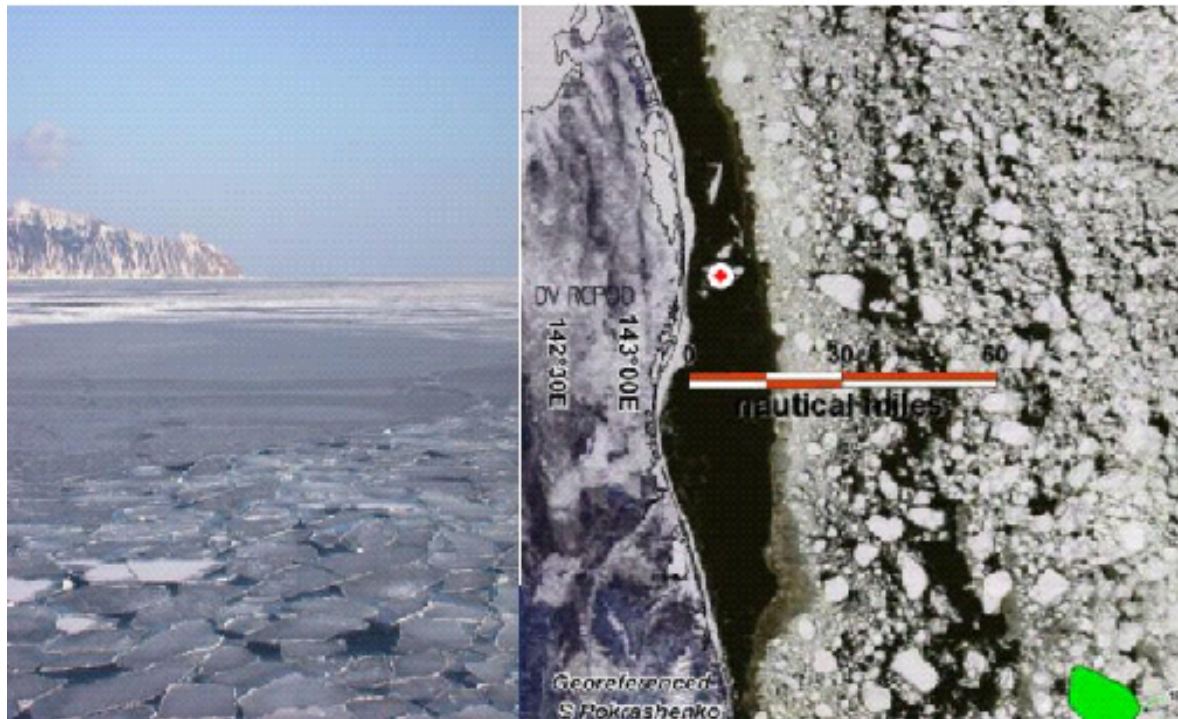


図2.27 ランドサット衛星画像の例

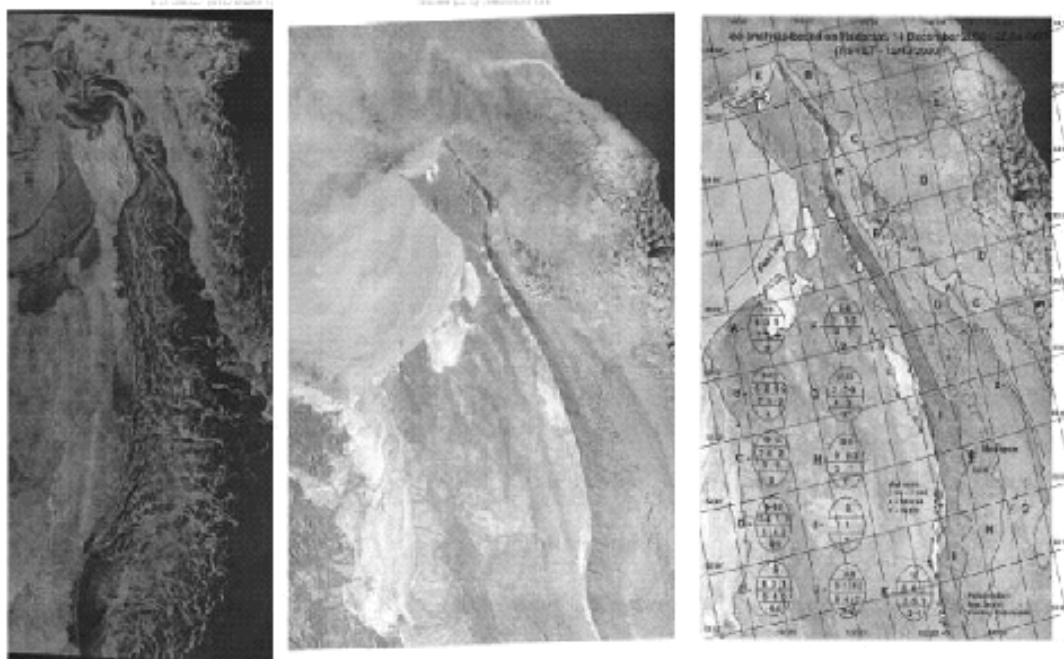


図2.28 設定されたタンカー航路

